

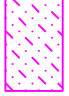






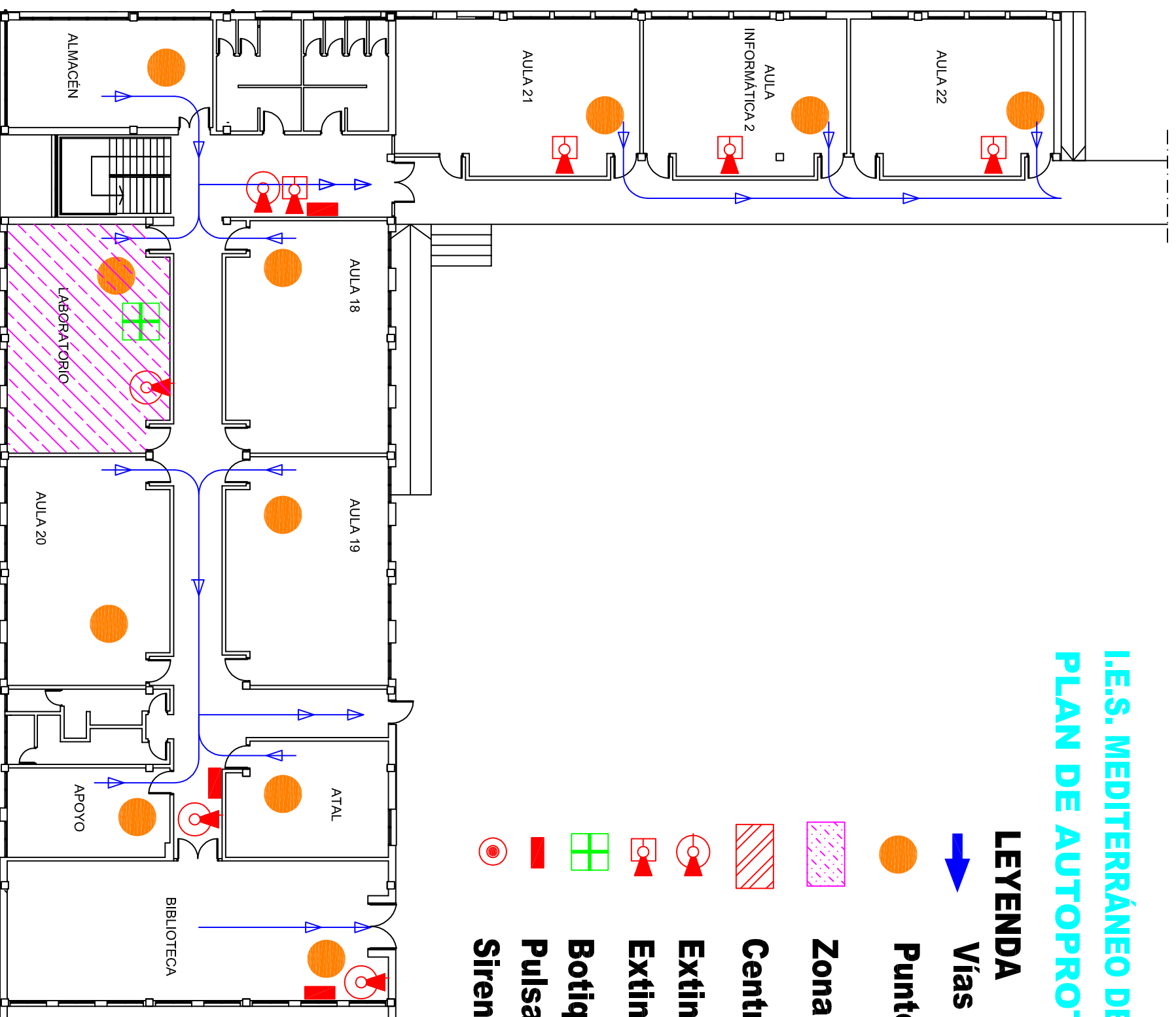


I.E.S. MEDITERRÁNEO DE GARRUCHA PLAN DE AUTOPROTECCION ESCOLAR

LEYENDA

-  Vías de Evacuación
-  Punto de encuentro
-  Zona de riesgo
-  Centro de comunicaciones
-  Extintor de polvo 55A-113B
-  Extintor de CO₂
-  Botiquín
-  Pulsador de alarma de incendios
-  Sirena



VÍAS EVACUACIÓN
EDIFICIO NUEVO
PLANTA BAJA

nº plano 4